

Maths

Shape

- Calculate angles around a point, in a triangle and in quadrilaterals
- Regular and irregular polygons
- Circles
- 3D Shapes

Position and Direction

- Four quadrants, coordinates, translation, line of symmetry, reflection

Statistics

- Line graph, bar chart, timetables, pie charts, the mean

Converting Units



DT – Digital World: Navigating the world

- To develop a sustainable product concept
- Recall and describe the name and use of key tools used in Tinkercad
- Combine more than one object to develop a finished 3D CAD model in Tinkercad
- Complete a product pitch plan that includes key information

PSHE

Changing Me

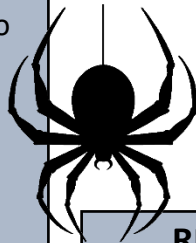
PE

Cricket

Science – Light

In science we will:

- Recognise that light appears to travel in straight lines
- Explain that objects are seen because they give out or reflect light into the eye
- Explain that light travels from light sources to our eyes or from light sources to objects and then to our eyes
- Explain why shadows have the same shape as the objects that cast them



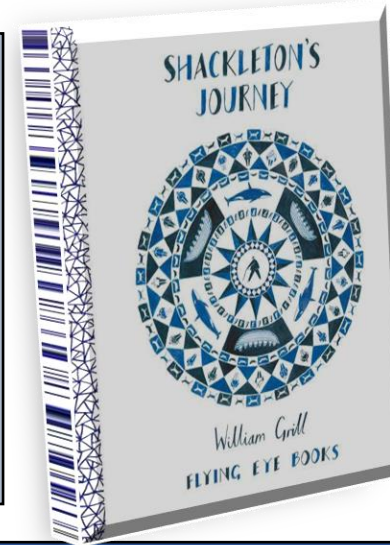
English

Non-Fiction - Shackleton's Journey by William Grill

To write an account of a famous adventurer

Diary writing – Residential

Fiction – Scary story writing – Alma



Computing

Sensing

Music

Leaver's performance

Geography – Who are Britain's National Parks for?

Identify, describe and suggest reasons for the distribution of National Parks in the United Kingdom.

Describe and explain why National Parks encourage visitors.

Locate the main physical & natural features of national parks.

Recognise that National Parks are looked after by people doing a range of different jobs, inc. farmers.

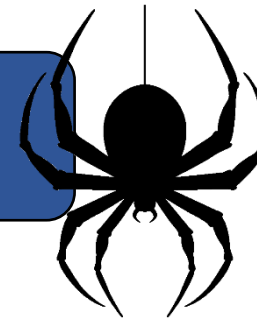
Geographical Skills

Use maps, atlases, globes and digital/computer mapping to locate countries and describe features studied.



Spiders – Year 5 and 6

Spring Term 1





RE – What do religious and non-religious worldviews teach about caring for the Earth?

- Explore issues around climate change, environmental protection and the future sustainability of the planet and how different religious views act on these.

MFL

- Holidays

Each day	Each week	Each Half Term
<ul style="list-style-type: none"> - Please read your book each day – even if it is just a few pages. <u>This is the most important activity you can do!</u> - Bug Club books need to be read at least twice for fluency - If you are on Accelerated Reader, you can quiz on this website either at home or when you come to school the next morning: https://global-zone61.renaissance-go.com/welcomeportal/2236638 or scan the code ...  	<p>English</p> <ul style="list-style-type: none"> - Practice your weekly spelling list ready for a check each Friday - Handwriting <p>Maths</p> <ul style="list-style-type: none"> - Times Tables Rockstars - Maths.co.uk Quiz (fortnightly) <p>SPAG</p> <ul style="list-style-type: none"> - SPAG.com Quiz (fortnightly) 	<p><u>Topic home learning task</u></p> <p>Visit a National Park in the UK and create a scrapbook highlighting its location using a range of maps. Include a selection of pictures or images to show its key physical and human features. Then, choose one of the 58 National Parks in the United States and collect the same type of information. Finally, compare the two parks, noting both the similarities and the differences.</p> 